

SURVEYOR'S OFFICE

Hamilton County

Kenton C. Ward, CFM
 Surveyor of Hamilton County
 Phone (317) 776-8495
 Fax (317) 776-9628

Suite 188
 One Hamilton County Square
 Noblesville, Indiana 46060-2230

Map Correction-Field Verification

Drain Number: # 328

Drain Length: 7956.3

Drain Name: Ashbury Park : Sec. 2 Arm

Change +/-: -483.6'

Date: 3-8-2011

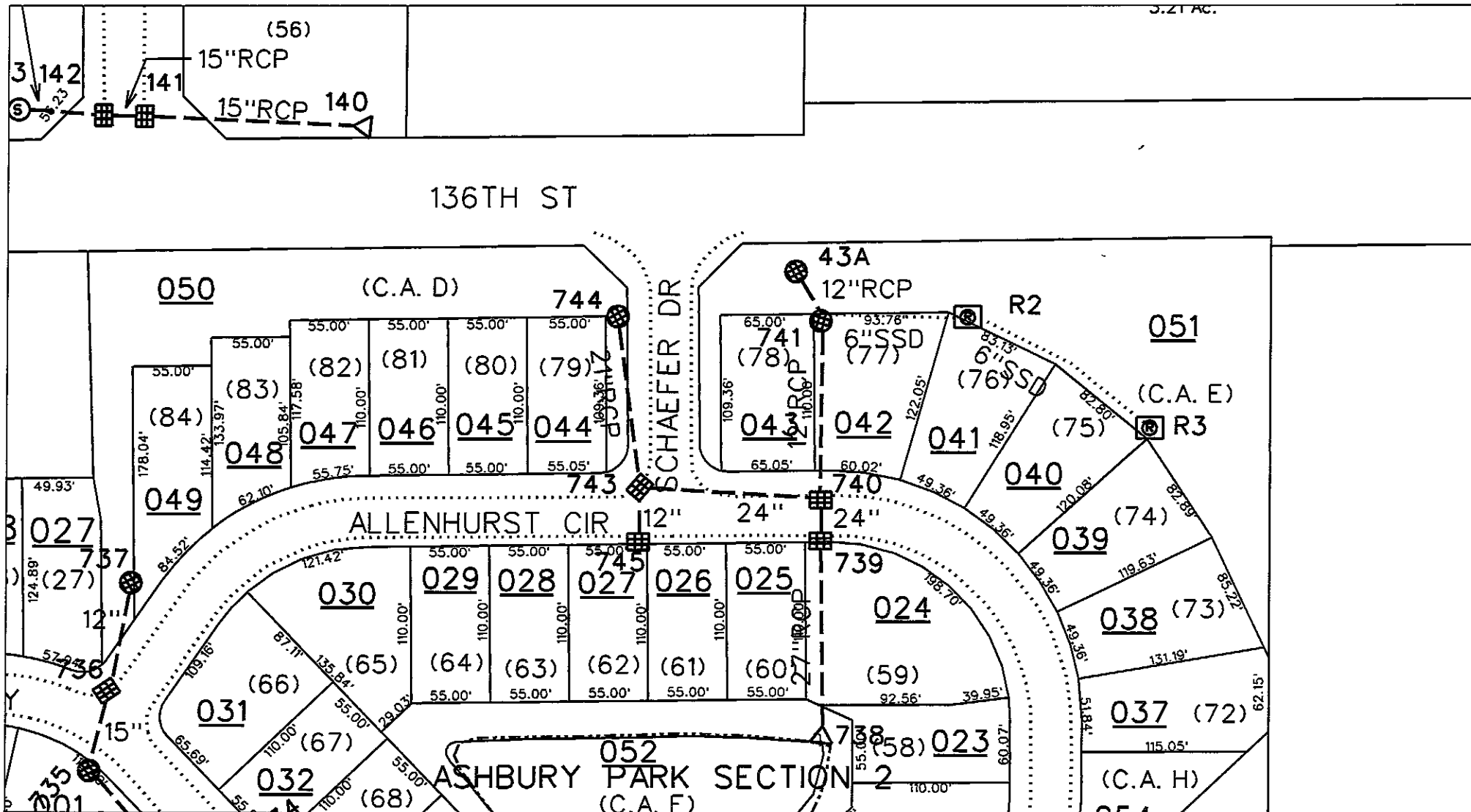
New Length: 7472.7

Verified By: SLM, LMC

Notes & Sketch:

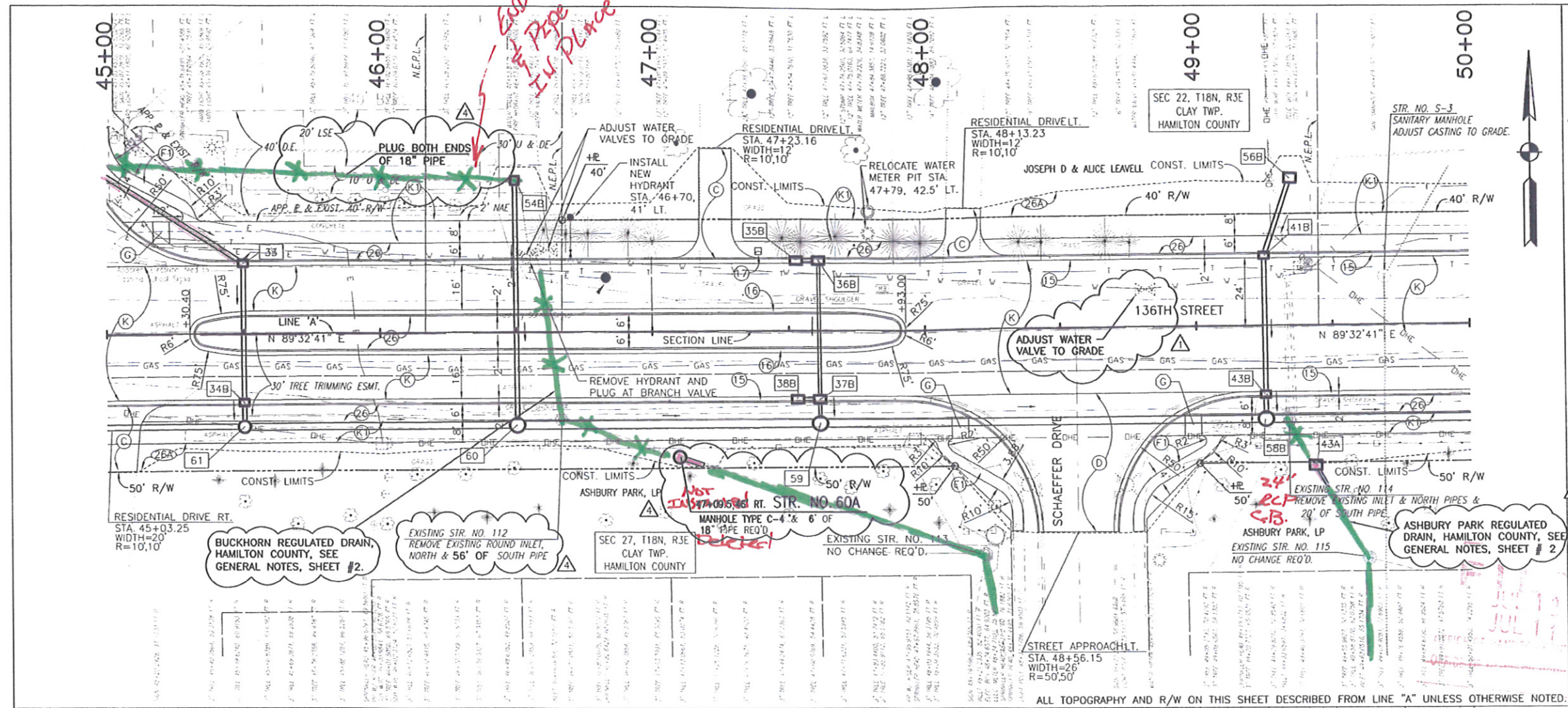
The City of Carmel widened 136th street between Ditch and Springville. (See plans by DLZ with Project #04-07)
 The 12" CMP existing under 136th St and tied into STR144A was removed. Also, the 18" RCP from Str. 744A to 744 was plugged and no longer functions. Also removed was the 6" SSD running along the right of way into existing structure 742. Existing Str. 742 was removed and a new inlet was set 20' south on the existing 12" RCP. Therefore, 230' of 6" SSD, 70' of 12" CMP, 20' of 12" RCP, and 1163.6' of 18" RCP was removed due to this road project.

Suzanne L. Mills
 GIS Specialist



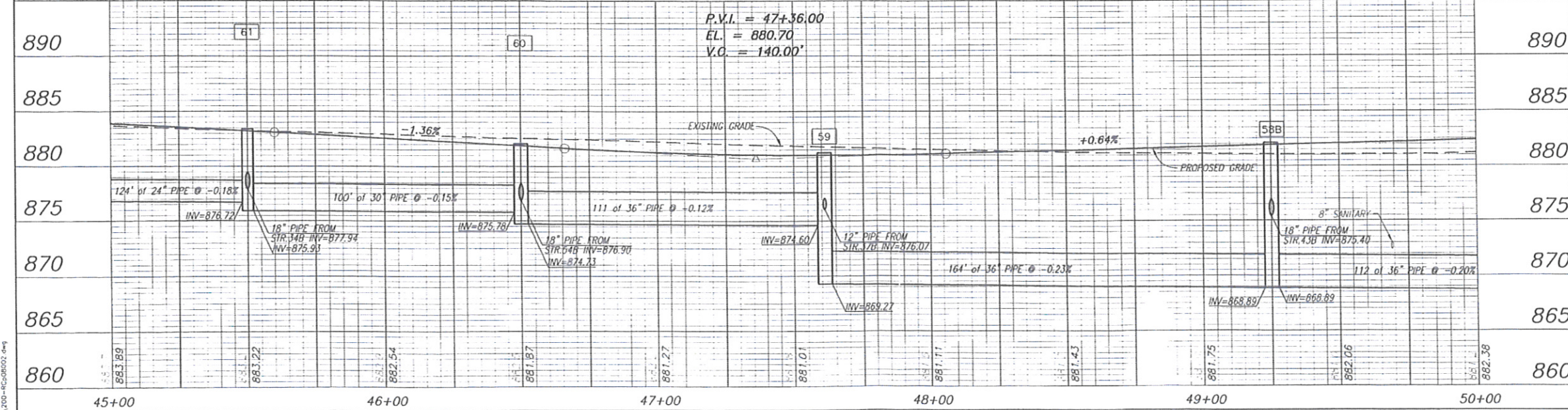
sub_rg_drm.dgn 3/14/2011 1:43:20 PM

See Plans B4:DLZ - PRJ 04-07 ; Sheet 13



- LEGEND**
- (15) COMBINED CONCRETE CURB AND GUTTER TYPE II
 - (16) COMBINED CONCRETE CURB AND GUTTER TYPE III
 - (17) MAILBOX ASSEMBLY
 - (26) SODDING, NURSERY
 - (26A) MULCHED SEEDING TYPE 'U' ON 4" TOPSOIL
 - (C) CEMENT CONCRETE PAVEMENT FOR DRIVEWAYS, ON 6" COMPACTED AGGREGATE, SIZE NO. 53
 - (D) HMA FOR APPROACHES TO BE: 165# HMA SURFACE, TYPE B ON 275# /SYD. HMA INTERMEDIATE, TYPE B ON 990# /SYD. HMA BASE, TYPE B
 - (K) MAINLINE PAVEMENT SECTION, SEE TYPICAL SECTION SHEET.
 - (K1) TRAIL PAVEMENT SECTION, SEE TYPICAL SECTION SHEET.
 - (-) CURB RAMP (LETTER INDICATES TYPE), COLORED CONCRETE
 - (F) 4" CONCRETE SIDEWALK

- 33 45+50, LT. STR. NO. 33
INLET TYPE J-10 & 50' OF 18" PIPE REQ'D
- 34B 45+50, RT. STR. NO. 34B
CATCH BASIN TYPE K-10 W/ CATCH BASIN HOOD & 9' OF 18" PIPE REQ'D
- 35B 47+53, LT. STR. NO. 35B
INLET TYPE B-15 & 8' OF 12" PIPE REQ'D
- 36B 47+61, LT. STR. NO. 36B
INLET TYPE C-15 & 50' OF 12" PIPE REQ'D
- 37B 47+61, RT. STR. NO. 37B
CATCH BASIN TYPE MOD C-15 W/ CATCH BASIN HOOD & 9' OF 12" PIPE REQ'D
- 43A 49+43.51, RT. STR. NO. 43A
INLET TYPE G-7 & 8' OF 12" PIPE REQ'D
- 38B 47+53, RT. STR. NO. 38B
INLET TYPE B-15 & 8' OF 12" PIPE REQ'D
- 41B 49+25, LT. STR. NO. 41B
INLET TYPE J-10 & 83' OF 18" PIPE REQ'D
- 43B 49+25, RT. STR. NO. 43B
CATCH BASIN TYPE K-10 W/ CATCH BASIN HOOD & 9' OF 18" PIPE REQ'D
- 54B 49+49.54, LT. STR. NO. 54B
CATCH BASIN TYPE E-7 W/ CATCH BASIN HOOD & 89' OF 18" PIPE REQ'D
- 56B 49+35.53, LT. STR. NO. 56B
INLET TYPE E-7 & 30' OF 18" PIPE REQ'D
- 58B 49+25.34, LT. STR. NO. 58B
MANHOLE TYPE J-4 & 112' OF 36" PIPE REQ'D
- 59 47+61.34, RT. STR. NO. 59
MANHOLE TYPE J-4 & 164' OF 36" PIPE REQ'D
- 60 46+50.34, RT. STR. NO. 60
MANHOLE TYPE J-4 & 111' OF 36" PIPE REQ'D
- 61 45+50.34, RT. STR. NO. 61
MANHOLE TYPE J-4 & 100' OF 30" PIPE REQ'D



PERMIT REVISIONS 7-10-07 JAR
ADDENDUM 1 2-16-07 JAR



RECOMMENDED FOR APPROVAL
DESIGN ENGINEER
DATE: 7-10-07
DESIGNED: FS DRAWN: JJC
CHECKED: JAR CHECKED: FS

CITY OF CARMEL
136th STREET
PLAN AND PROFILE SHEET
LINE 'A' STA. 45+00 TO 50+00

HORIZONTAL SCALE 1"=20'	ROAD FILE
VERTICAL SCALE 1"=5'	DESIGNATION
SURVEY BOOK	SHEETS 13 of 76
CONTRACT	PROJECT 04-07